

# TECHNOLOGICAL SPECIFICATIONS

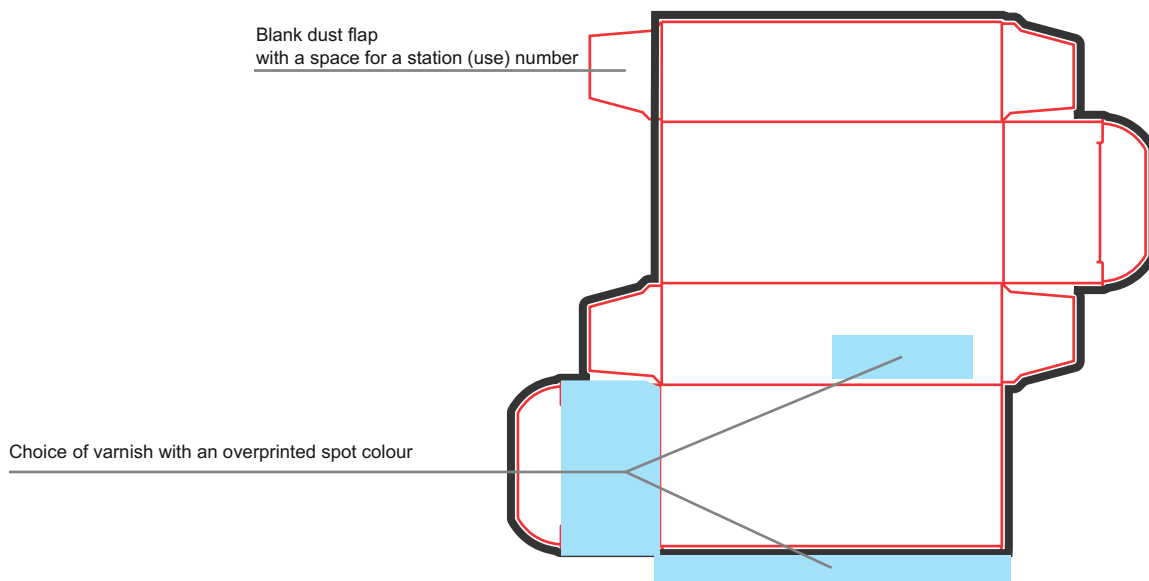
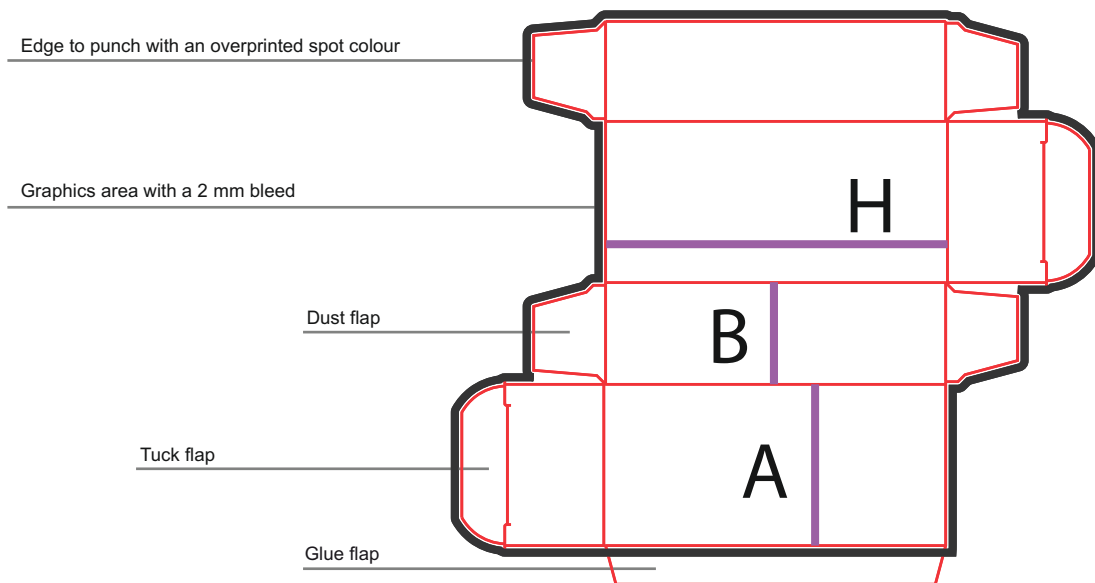
The file format required for printing is PDF, with suitably selected parameters for offset printing and further postpress assumptions. Our technological specifications are intended to guide you through the essential stages in correctly placing a production order.

## General information:

Box dimensions AxBxH

Bleed 2 mm.

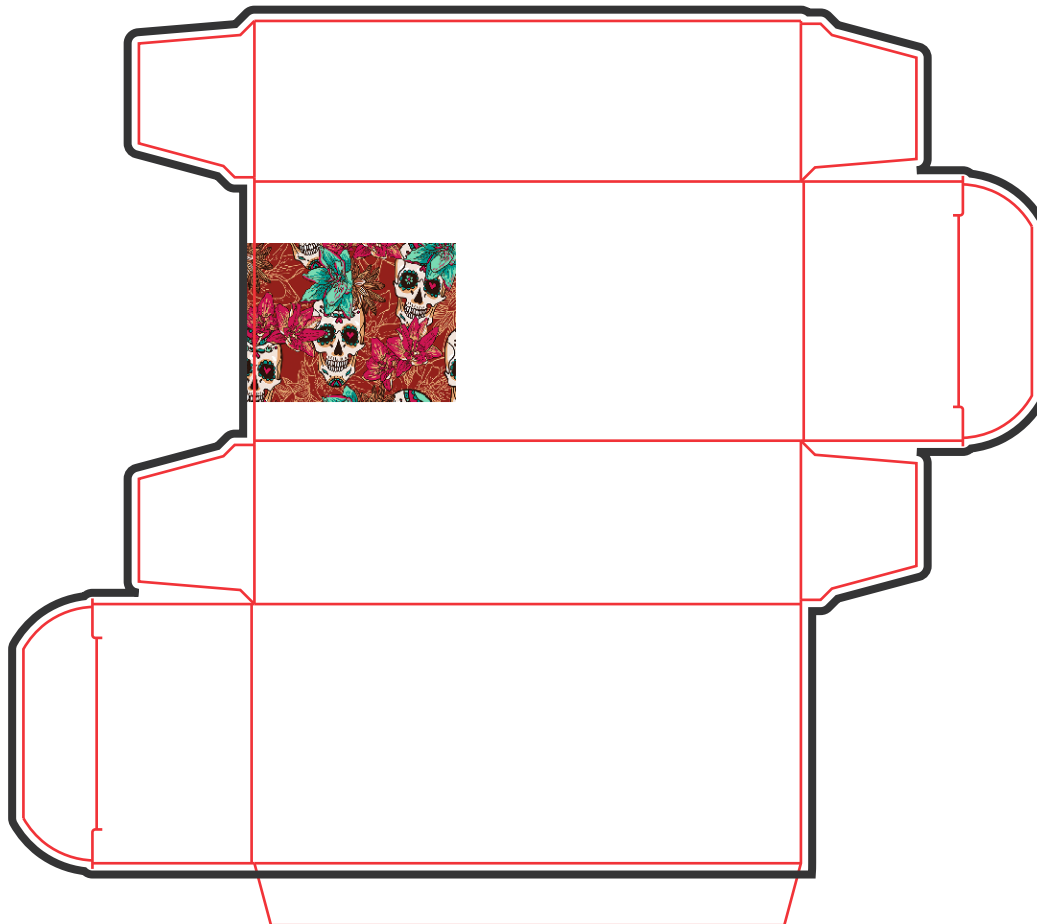
Choice of dispersion varnish if required for protection



# TECHNOLOGICAL SPECIFICATIONS

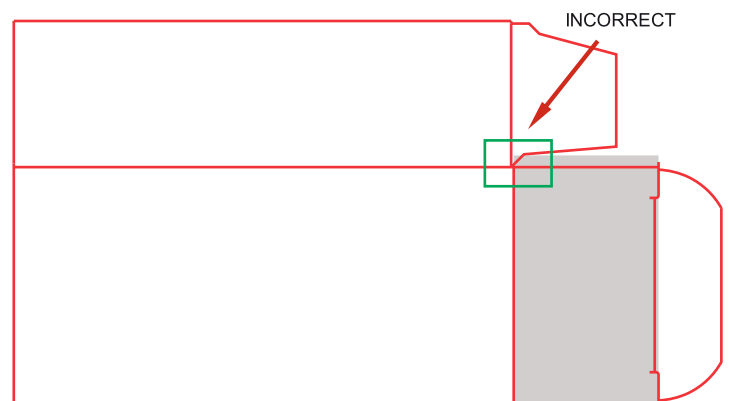
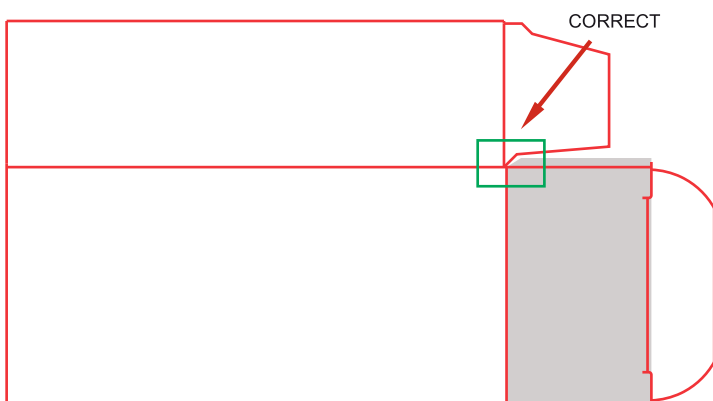
## Graphics:

300 dpi bitmap, CMYK without colour profiles added



## Aesthetics for the box flaps and panels:

Graphics and other objects should not overlap the neighbouring flaps or panels.

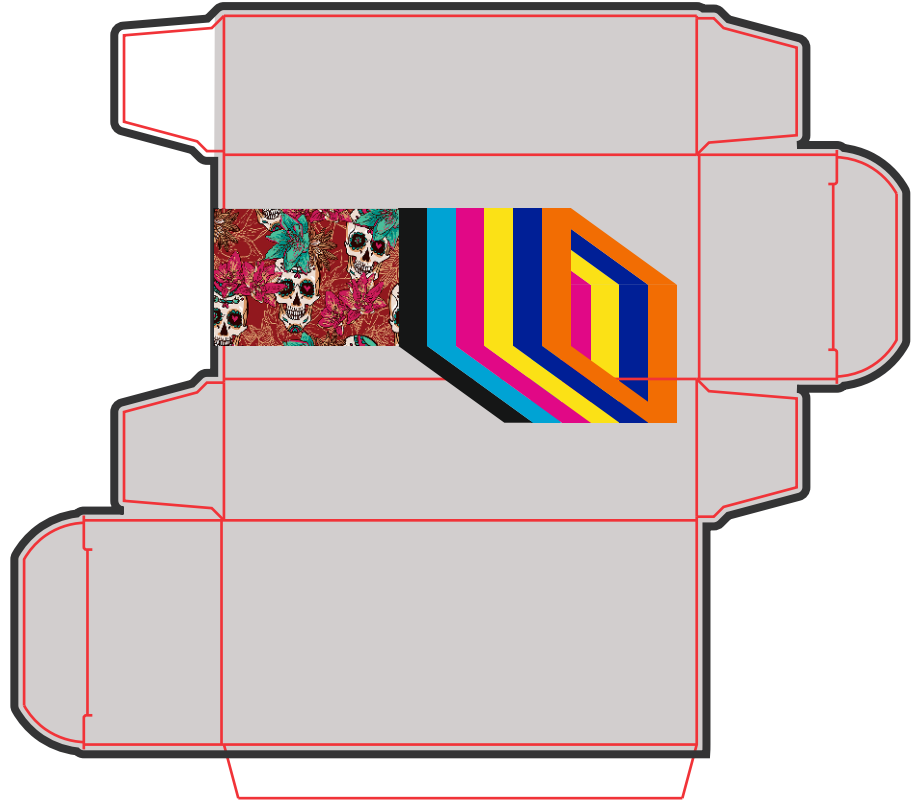


# TECHNOLOGICAL SPECIFICATIONS

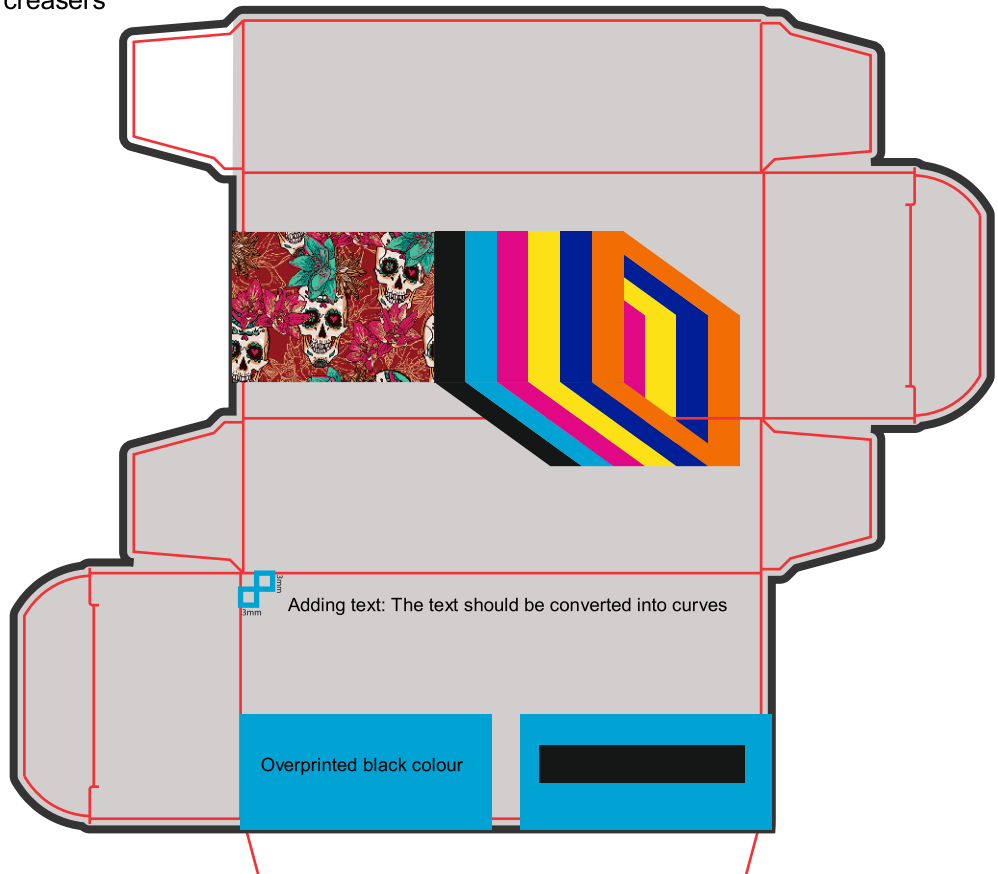
Adding vector objects:

Table of colours used:

Black
Cyan
Magenta
Yellow
Pantone Reflex Blue C
Pantone Orange 021 C



Adding text while maintaining the 3 mm gap for knives and creasers



# TECHNOLOGICAL SPECIFICATIONS

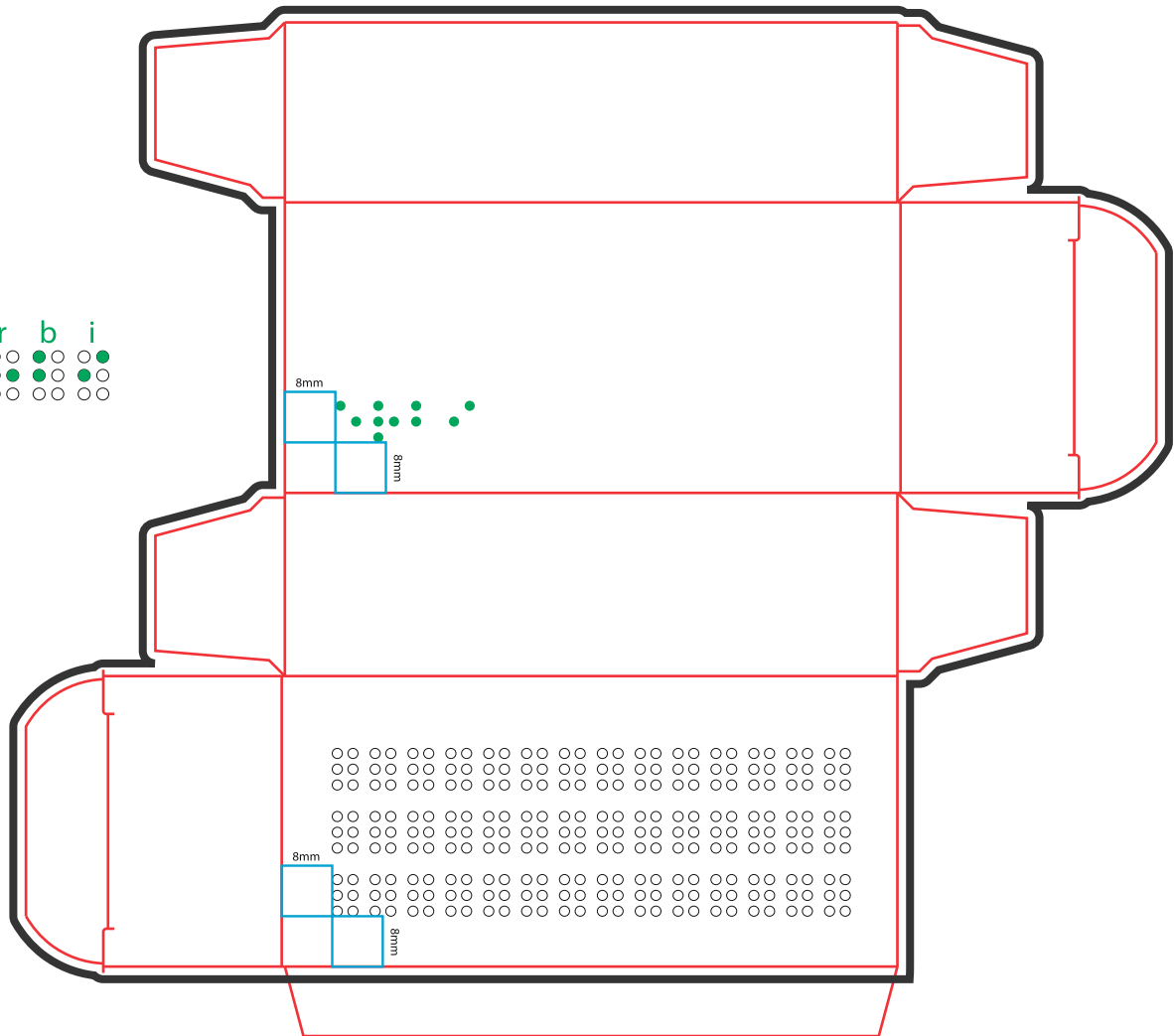
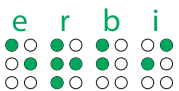
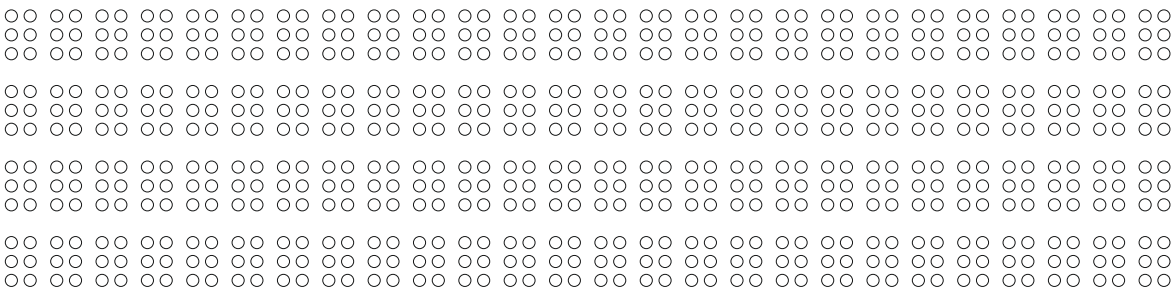
## Braille embossing:

Braille with an overprinted spot colour  
(CAUTION – do not convert or scale the Braille embossing once the template includes it)

Medium Marburg Braille prepared with another overprinted spot colour, at most 4 lines with up to 26 letters, parallel to the glue flap, on no more than two box panels.

Perpendicular to the glue flap and proportional to the panel size, while maintaining the 8 mm gap from the punching and creasing edges.

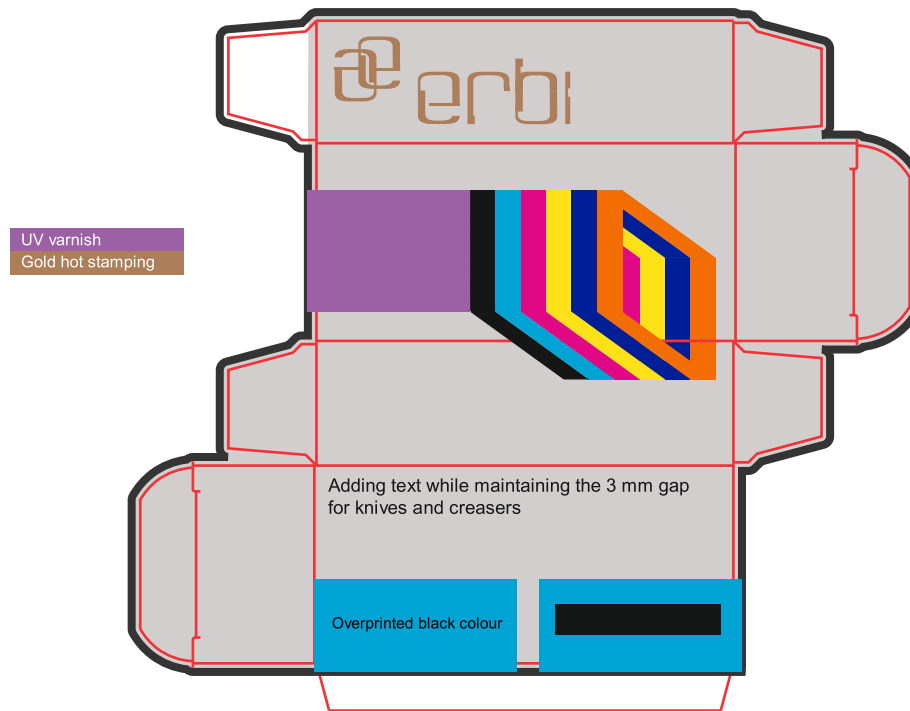
## Maximum template (scale 1/1):



# TECHNOLOGICAL SPECIFICATIONS

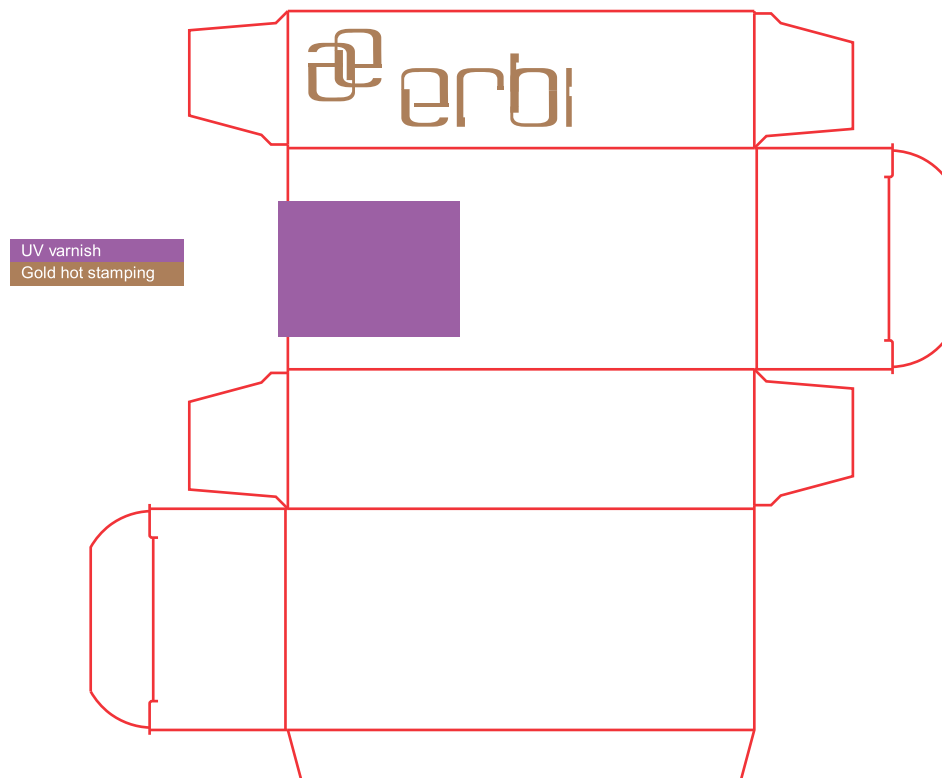
## Quality improvement:

UV varnish of vector objects overprinted with a spot colour. Hot stamping with selected vector objects plus trapping.



Additional PDF file or page with the improvements only.

(CAUTION – maintain their precise position in relation to the image file)

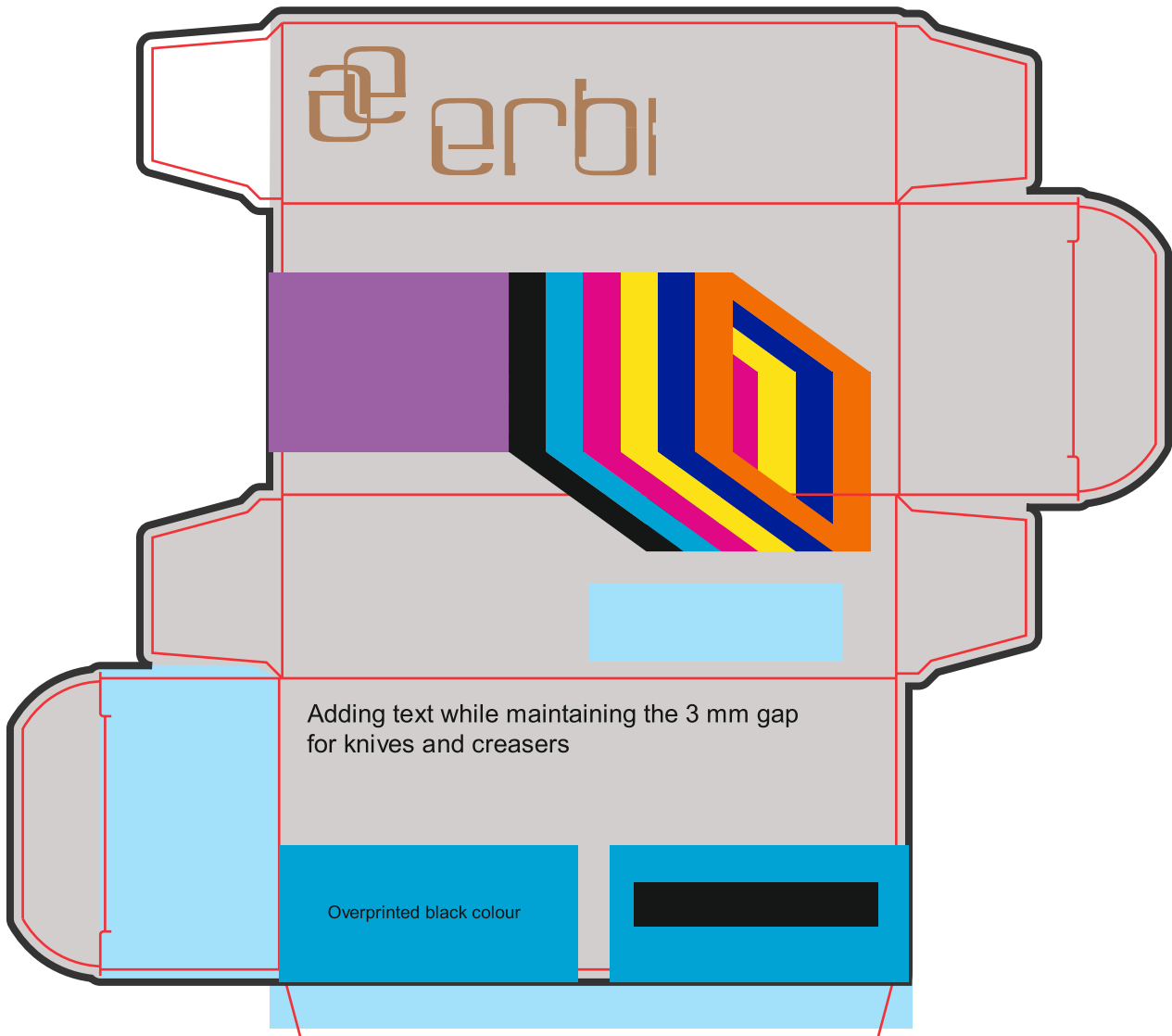


# TECHNOLOGICAL SPECIFICATIONS

Correctly prepared PDF file:

Sample information table:

name: <b>Packaging name</b>		Braille information 
inner dimensions [mm]: <b>Box dimensions AxBxH</b>		
colours		Quality improvement:
Black	Punching tool	UV varnish
Cyan	Braille	Gold hot stamping
Magenta	Varnish selection	
Yellow		
Pantone Reflex Blue C		
Pantone Orange 021 C		



# TECHNOLOGICAL SPECIFICATIONS

We hope you find these technological specifications useful.